



Welcome to the **Dean Difference**

2023 Open Enrollment (September 26th – October 21st)

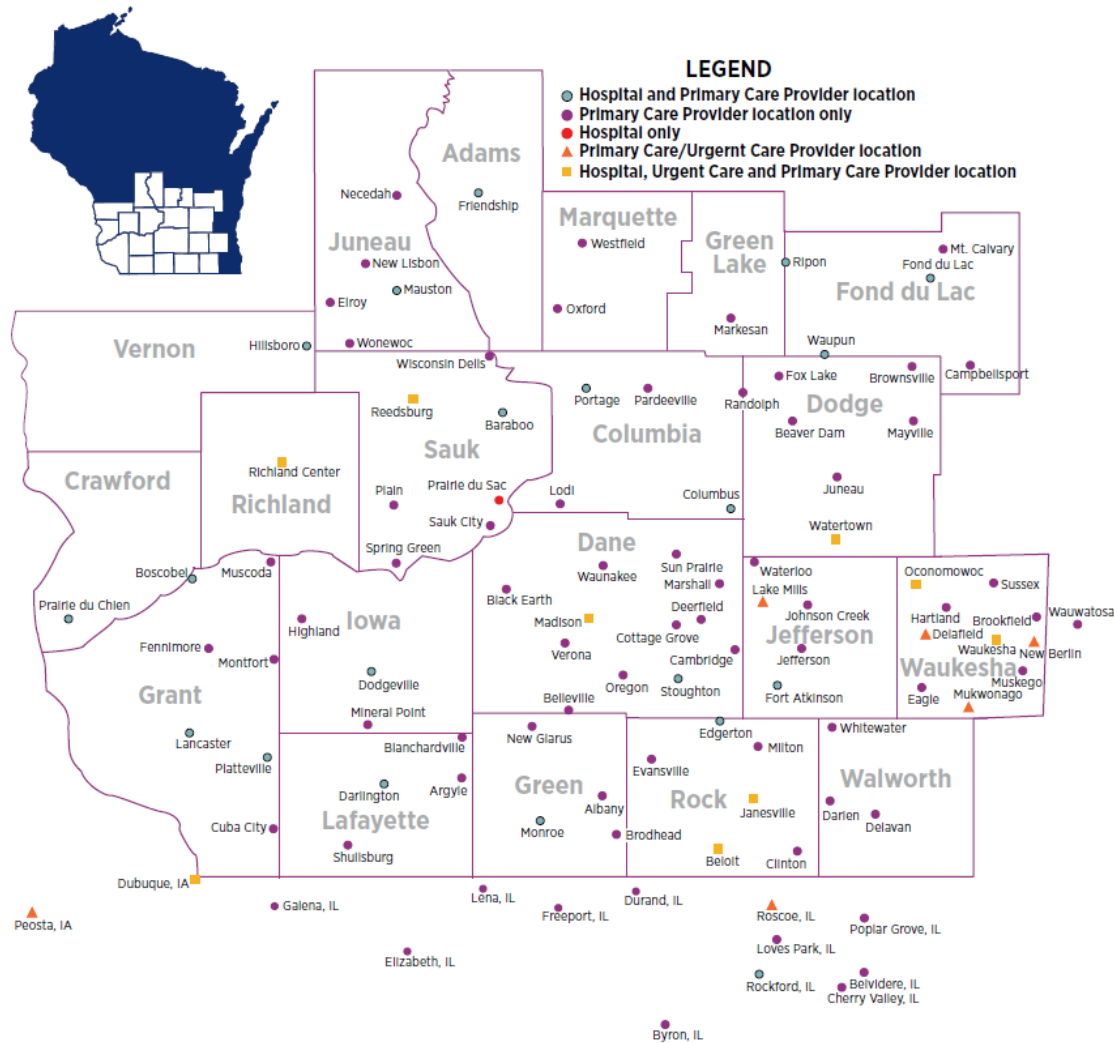


2023 State of Wisconsin Group Health Insurance Program



**CHOOSE THE RIGHT
NETWORK FOR YOU**

DEAN HEALTH PLAN – HMO NETWORK



Major Health Systems

- SSM Health Hospitals & Clinics (Dean Medical Group, Fond du Lac Regional and Monroe Clinics)
- Prairie Ridge Health Hospital and Clinics
- ProHealth Care Hospitals and Clinics
- Fort HealthCare Hospital and Clinics
- Sauk Prairie Healthcare Hospital and Clinics

Find a provider or location

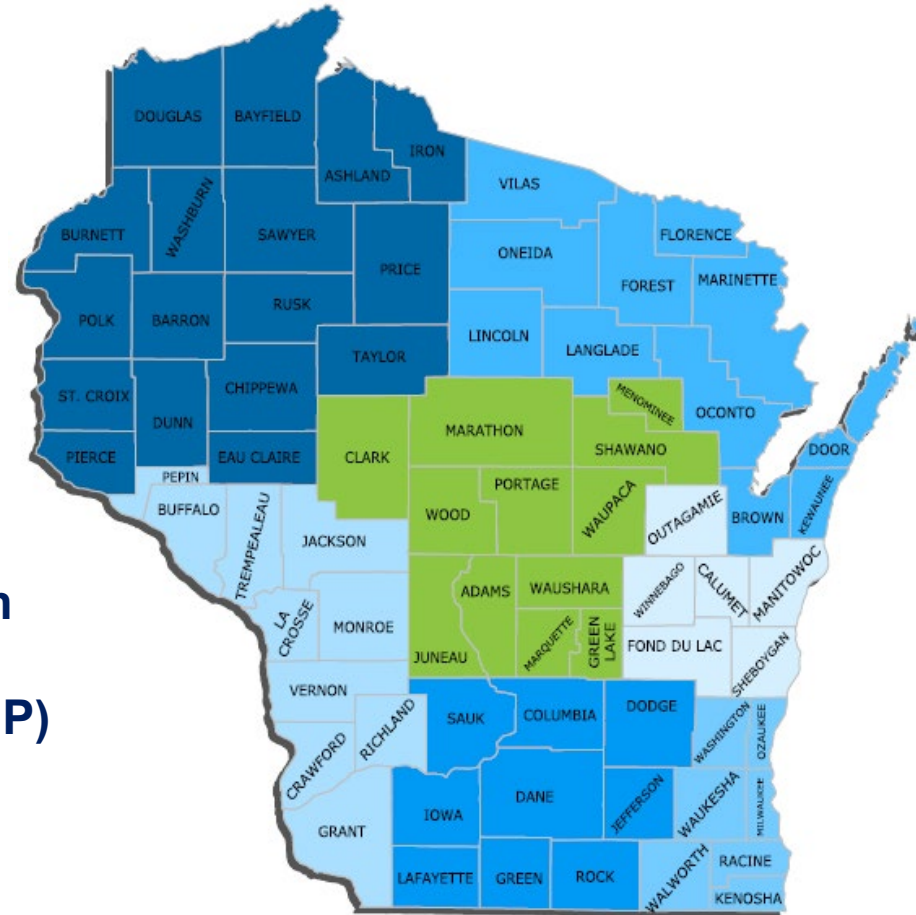
Visit deancare.com/doctors or
deancare.com/locations

DEAN HEALTH PLAN - PPO NETWORK

STATEWIDE

Providers 56,541

Hospitals 144



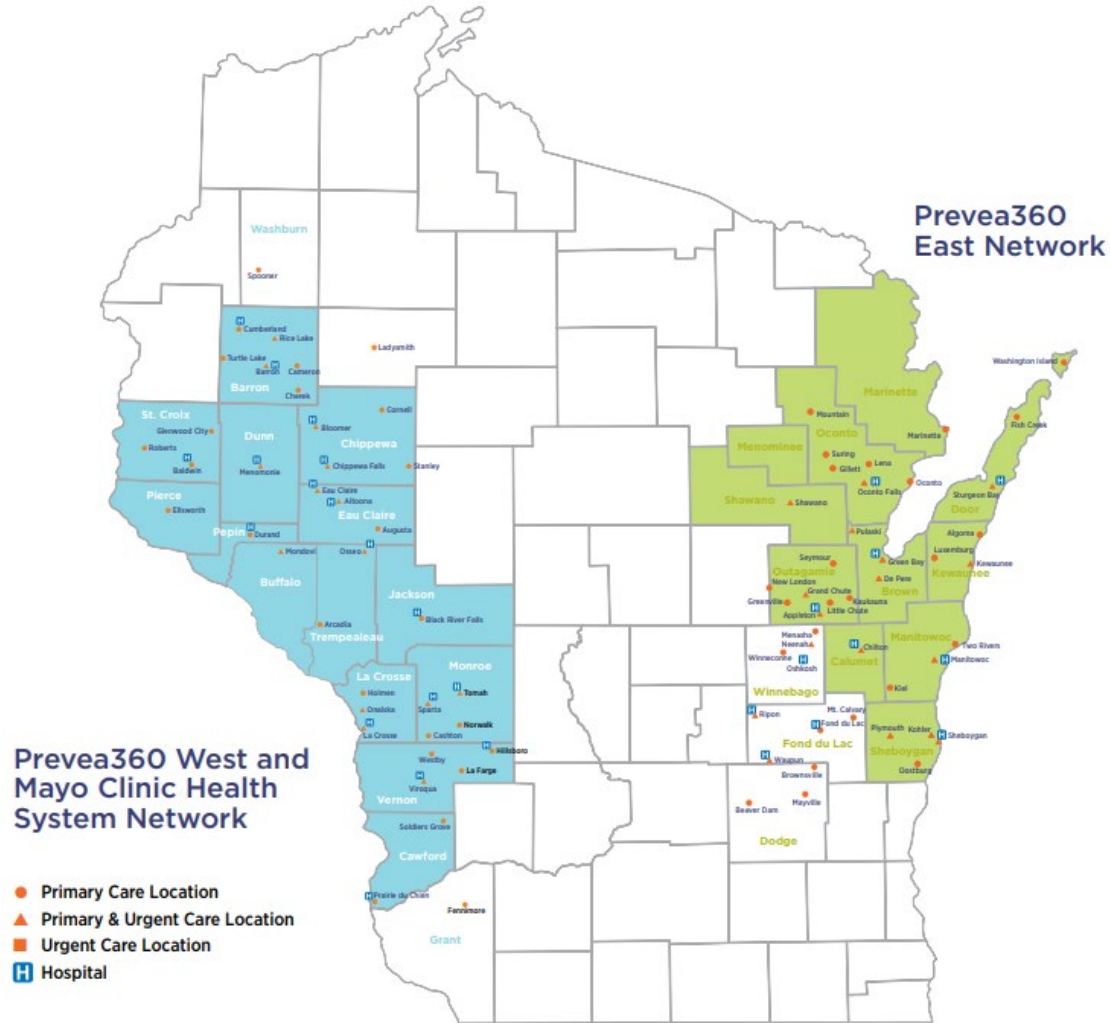
**Nationwide coverage
featuring preferred
providers within the First
Health Network**

NEW FOR 2023

1. Access Plan By Dean Health Plan
2. State Maintenance Plan (SMP) By Dean Health Plan
 1. Florence County (State Employees)
 2. Florence, Marquette, Waupaca and Waushara Counties

Visit providerlocator.firsthealth.com/deanprimary

PREVEA360 – HMO NETWORKS



ACTION REQUIRED - NEW FOR 2023.....

We have optimized the structure of our Prevea360 provider network offering, adding a second comprehensive provider network option for State of WI Group Health Insurance Program members to select.

Be sure to re-enroll for 2023 and select your network option when completing your enrollment elections to ensure access to your network of choice.

To view the most up-to-date providers and locations:

1. Go to prevea360.com/doctors.
2. Select your health plan type in the drop-down menu.
For the Prevea360 East Network, select [State of WI Employee - Prevea360 East].
For Prevea360 West, select [State of WI Employee - Prevea360 West and Mayo Clinic Health System].
3. Search by name, specialty, gender, language and/or location.

Find a provider or location

Visit prevea360.com/doctors or prevea360.com/locations

PREVEA360 – HMO NETWORK OPTIONS

Option 1 - Dean Health Plan – Prevea360 East

If a member prefers to get primary care in eastern Wisconsin, then they should select ***Dean Health Plan – Prevea360 East***.

Core Counties include Brown, Calumet, Door, Kewaunee, Manitowoc, Marinette, Menominee, Oconto, Outagamie, Shawano and Sheboygan counties.

Major Health Systems

Prevea Health Clinics

HSHS WI Hospitals & Clinics

Door County Memorial Hospital & Medical Center

Holy Family Memorial Hospital and Clinics



PREVEA360 – HMO NETWORK OPTIONS

Option 2 - Dean Health Plan – Prevea360 West and Mayo Clinic Health System

If a member prefers to get primary care in western Wisconsin, they should then select ***Dean Health Plan – Prevea360 West and Mayo Clinic Health System***.

Core Counties include Barron, Buffalo, Chippewa, Crawford, Dunn, Eau Claire, Jackson, La Crosse, Monroe, Pepin, Pierce, St. Croix, Trempealeau and Vernon counties.

Major Health Systems

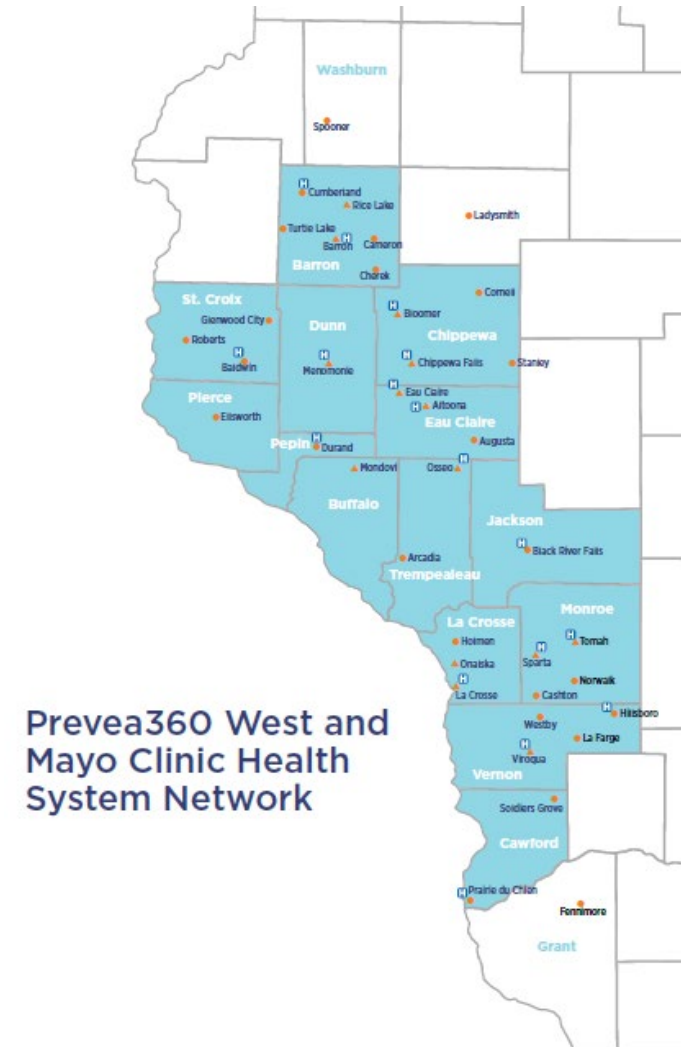
Prevea Health Clinics

SHS WI Hospitals & Clinics

Mayo Clinic Health System

Oakleaf Clinics

Black River Memorial Hospital



A photograph of two young women sitting on a grassy lawn in a park, stretching their legs. The woman on the left is wearing a black tank top and leggings, while the woman on the right is wearing a yellow tank top and jeans. They are both smiling and looking at each other. The background shows trees and a park bench under a bright sky.

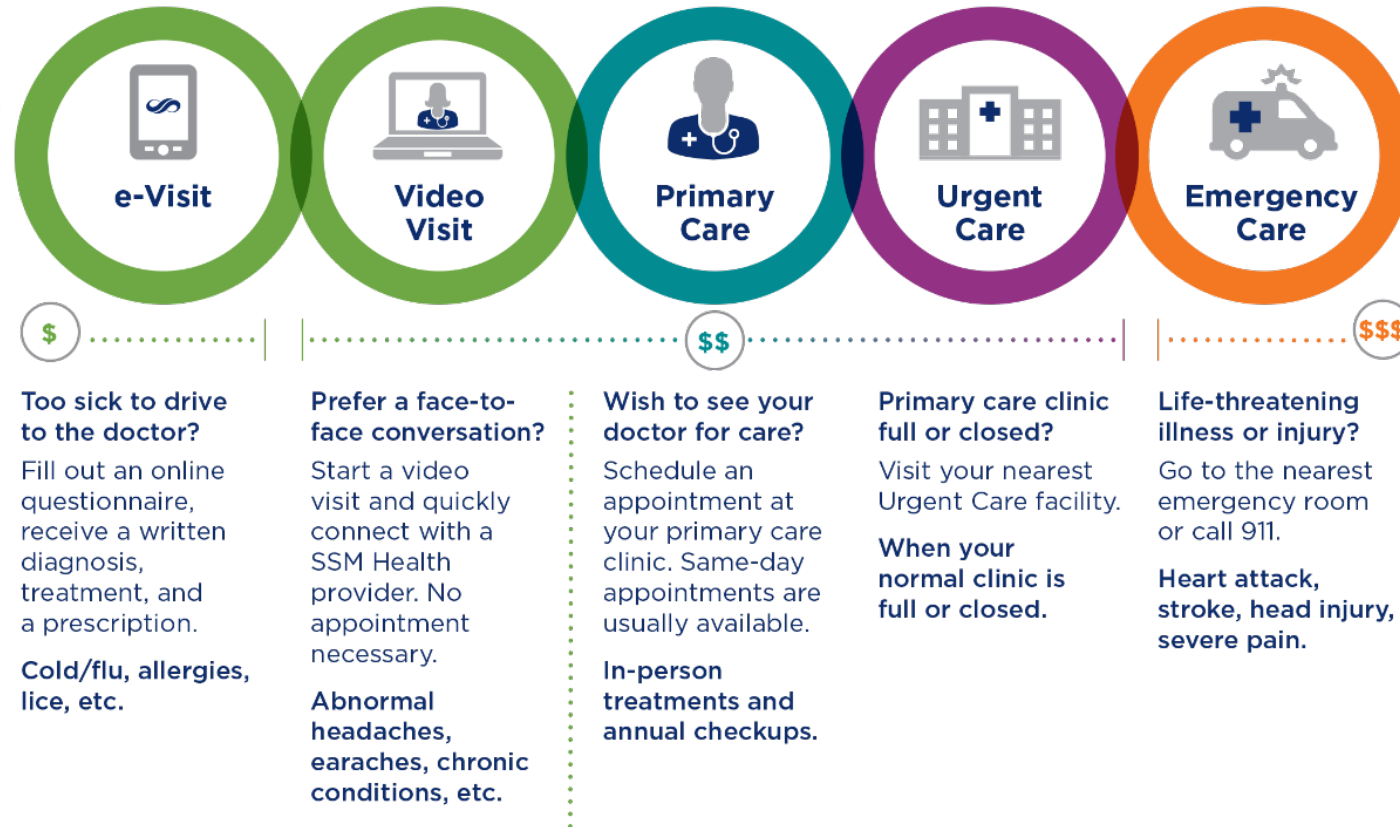
INNOVATIVE BENEFITS

RIGHT CARE AT THE RIGHT TIME

Knowing your care options before you need them saves you time and money.

SSM Health Express Virtual Care

SSM Health Express Virtual Care offers two convenient and affordable options for patients to access non-emergency care via smart phone or computer without scheduling an appointment. These services are available to everyone, whether or not they are an established SSM Health patient.



SSM HEALTH EXPRESS VIRTUAL CARE

Convenient care meets affordability

- Low-cost care from the comfort of home with most plans

E-Visit

- Fill out a digital questionnaire, receive a written diagnosis, prescription, and treatment plan
- Available during Urgent Care hours
- Get care for 30+ conditions including COVID-19 all from trusted SSM providers

Video Visit

- Face-to-face visit
- No Appointment Necessary
- Available during clinic hours
- Same cost as office visit
- For High Deductible Health Plans, e-Visits and Video Visits cost is \$39



Visit deancare.com/virtualcare

PREVEA VIRTUAL CARE

Convenient care meets affordability

- Low-cost care from the comfort of home with most plans
- Fill out a digital questionnaire, receive a written diagnosis, prescription, and treatment plan
- Available during Urgent Care hours
- Get care for 30+ conditions including COVID-19 all from trusted SSM providers



Visit prevea360.com/virtualcare



WHY CHOOSE DEAN?

Proprietary and Confidential. Do Not Distribute.

 **DeanHealthPlan.**
A member of SSM Health

MEMBER ADVANTAGES

Innovative Communication & Technology

- 24 Hour Nurse Advice Line
- Live virtual appointments with providers through telehealth services
- Member portal and MyChart

Essential Health Care

- Complex Case Management
- Preventive, wellness and disease management services
- Behavioral Health and Substance Use Case Management
- Advance Care Planning
- Transplant Case Management
- Maternal and Child Health Outreach and Education

First-Class Customer Service

- They are part of what makes the Dean Difference
- Focused on making member experience the priority
- Local – based in Wisconsin
- Our Customer Care Center are members too – they have asked the same questions



Care After Hours

Call **888-277-3832**



DeanHealthPlan

A member of SSM Health

24 Hour Nurse Advice Line

Call **800-576-8773**

RESOURCES FOR STATE OF WI GHIP



Coverage Details

Decision Guides
Certificate of Coverage
Schedule of Benefits
Summary of Benefits and Coverage (SBCs)



Providers and Information

Online Provider Search
Printable Provider Directories (PDF)
Service Area Maps



Resources

FAQs & Resources
Direct Links to Wisconsin
Department of Employee Trust
Funds Web Page
Contact Us
Open Enrollment Health Webinars

Visit deancare.com/wi-employees

Visit prevea360.com/wi-employees

STATE OF WISCONSIN GHIP WELLNESS

[Home](#) / [Members](#) / [State of Wisconsin Group Health Insurance Program](#) / State of Wisconsin wellness

State of Wisconsin wellness



Through our partnership with WebMD, you can create a customized health experience to help you on your journey to achieve your best health, whatever that means to you. With thousands of resources at your fingertips, you can find the tools you need to be successful.

Your Dean Health Plan's wellness programs and Living Healthy, powered by WebMD, are independent of your WebMD programs through the State of Wisconsin Group Health Insurance Program. Separate user IDs and Passwords are required. Your Dean Health Plan Living Healthy account is available on our member portal at the 'Living Healthy' link after you log in.



Wellness programs & features

- > [WELLNESS EVENTS](#)
- > [BEHAVIORAL HEALTH](#)
- > [WELLNESS VIDEO LIBRARY](#)
- > [REAL GOALS](#)
- > [NICOTINE CESSATION](#)
- > [CARE MANAGEMENT](#)
- > [PREVENTIVE HEALTH TOOLKITS](#)
- > [PODCAST LIBRARY](#)

Visit prevea360.com/etfwellness
or deancare.com/etfwellness

THE DEAN DIFFERENCE



- **Robust coverage**
 - Whether you're in our largest network or our most focused network, you'll have the coverage you need
- **Exceptional care**
 - We only partner with health systems that share our core values and demonstrate them in practice
- **Great customer service**
 - Our customer care team is based locally here in Wisconsin
- **Benefits for the whole you**
 - 8 dimensions of wellness

HAVE QUESTIONS?

CALL

By Phone

Contact our Customer Care Center for questions about your benefits and more.

800-279-1301 (TTY: 711)

Monday – Thursday,

7:30 am – 5 pm

Friday, 8 am – 4:30 pm

CLICK

Enroll online

Support is just a click away.

Visit deancare.com/contact

VISIT

In Person

Stop by our Insurance Desk,
Monday – Friday,
8 am – 4:30 pm,
at our office or one of the
SSM Health Dean Medical
Group locations listed here:

Madison

- **Health Plan Business Office:**
1277 Deming Way
- **East:**
1821 S. Stoughton Road
- **West:**
752 N. High Point Road
- **South Madison Campus:**
1211 Fish Hatchery Road

Janesville

- **Janesville East:**
3200 E. Racine Street



DeanHealthPlan

A member of SSM Health

HAVE QUESTIONS?

CALL

By Phone

Call our Customer Care Center
for questions about your benefits
and more. 877-230-7555 (TTY: 711)
Monday – Thursday, 7:30 am – 5 pm
Friday, 8 am – 4:30 pm

CLICK

Online

Visit prevea360.com/contactus and
select “Send a message to Prevea360”

PREVEA360
health planSM